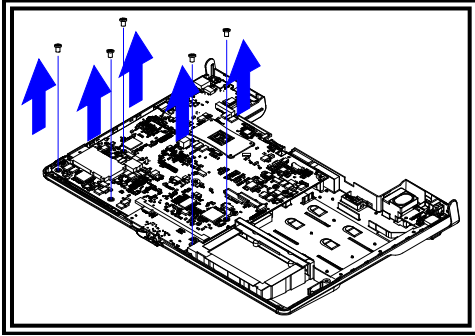


Removing The Main Board



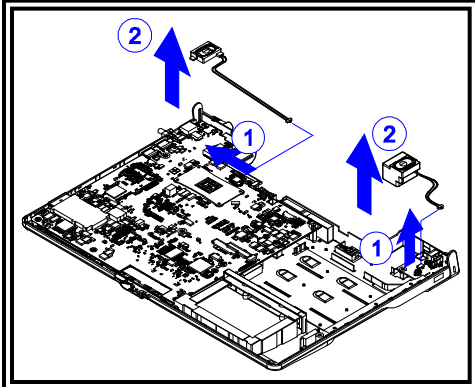
Follow the steps in:

- Legend 4-1 to Legend 4-9,
- Legend 7-1 to Legend 7-3,
- Legend 8-1, Legend 9-1,
- Legend 11-1 to Legend 11-3;

before proceeding as below. Reverse the procedure to assemble the motherboard.

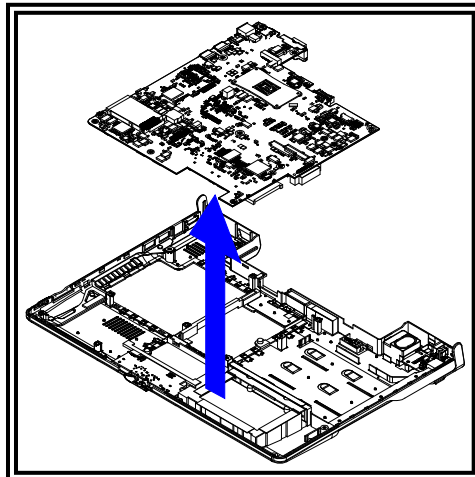
Legend 12-1:

- Remove the five screws as shown.



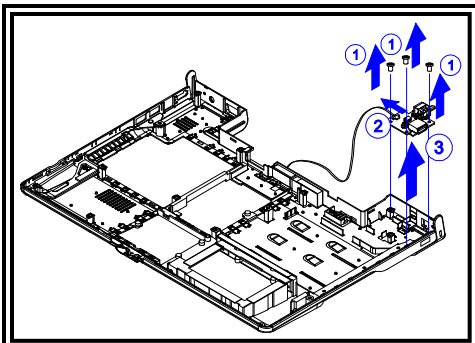
Legend 12-2:

- Disconnect the two speaker cables as shown by **#1**.
- Remove the two speakers as shown by **#2**.



Legend 12-3:

- Remove the motherboard as shown.



Legend 12-4:

- Remove the three screws as shown by **#1**.
- Disconnect the RJ11 cable as shown by **#2**.
- Remove the RJ11 board as shown by **#3**.

To restore the system back to its assembled situation:

- Reverse the steps in **Legend 12-1** to **Legend 12-4**.
- Reverse the steps in **Legend 11-1** to **Legend 11-3**.
- Reverse the steps in **Legend 9-1**.
- Reverse the steps in **Legend 8-1**.
- Reverse the steps in **Legend 7-1** to **Legend 7-3**.
- Reverse the steps in **Legend 4-1** to **Legend 4-9**.